

Steel City Bearings Ltd

for all your bearing & transmission needs

CONVERSION TABLE Inch to Metric

Fraction	Decimal	mm	Fraction	Decimal	mm	Fraction	Decimal	mm
1/32	0.0313	0.7938	1.1/32	1.0313	26.1938	2.1/32	2.0313	51.5938
1/16	0.0625	1.5875	1.1/16	1.0625	26.9875	2.1/16	2.0625	52.3875
3/32	0.0938	2.3813	1.3/32	1.0938	27.7813	2.3/32	2.0938	53.1813
1/8	0.1250	3.1750	1.1/8	1.1250	28.5750	2.1/8	2.1250	53.9750
5/32	0.1563	3.9688	1.5/32	1.1563	29.3688	2.5/32	2.1563	54.7688
3/16	0.1875	4.7625	1.3/16	1.1875	30.1625	2.3/16	2.1875	55.5625
7/32	0.2188	5.5563	1.7/32	1.2188	30.9563	2.7/32	2.2188	56.3563
1/4	0.2500	6.3500	1.1/4	1.2500	31.7500	2.1/4	2.2500	57.1500
9/32	0.2813	7.1438	1.9/32	1.2813	32.5438	2.9/32	2.2813	57.9438
5/16	0.3125	7.9375	1.5/16	1.3125	33.3375	2.5/16	2.3125	58.7375
11/32	0.3438	8.7313	1.11/32	1.3438	34.1313	2.11/32	2.3438	59.5313
3/8	0.3750	9.5250	1.3/8	1.3750	34.9250	2.3/8	2.3750	60.3250
13/32	0.4063	10.3188	1.13/32	1.4063	35.7188	2.13/32	2.4063	61.1188
7/16	0.4375	11.1125	1.7/16	1.4375	36.5125	2.7/16	2.4375	61.9125
15/32	0.4688	11.9063	1.15/32	1.4688	37.3063	2.15/32	2.4688	62.7063
1/2	0.5000	12.7000	1.1/2	1.5000	38.1000	2.1/2	2.5000	63.5000
17/32	0.5313	13.4938	1.17/32	1.5313	38.8938	2.17/32	2.5313	64.2938
9/16	0.5625	14.2875	1.9/16	1.5625	39.6875	2.9/16	2.5625	65.0875
19/32	0.5938	15.0813	1.19/32	1.5938	40.4813	2.19/32	2.5938	65.8813
5/8	0.6250	15.8750	1.5/8	1.6250	41.2750	2.5/8	2.6250	66.6750
21/32	0.6563	16.6688	1.21/32	1.6563	42.0688	2.21/32	2.6563	67.4688
11/16	0.6875	17.4625	1.11/16	1.6875	42.8625	2.11/16	2.6875	68.2625
23/32	0.7188	18.2563	1.23/32	1.7188	43.6563	2.23/32	2.7188	69.0563
3/4	0.7500	19.0500	1.3/4	1.7500	44.4500	2.3/4	2.7500	69.8500
25/32	0.7813	19.8438	1.25/32	1.7813	45.2438	2.25/32	2.7813	70.6438
13/16	0.8125	20.6375	1.13/16	1.8125	46.0375	2.3/16	2.8125	71.4375
27/32	0.8438	21.4313	1.27/32	1.8438	46.8313	2.27/32	2.8438	72.2313
7/8	0.8750	22.2250	1.7/8	1.8750	47.6250	2.7/8	2.8750	73.0250
29/32	0.9063	23.0188	1.29/32	1.9063	48.4188	2.29/32	2.9063	73.8188
15/16	0.9375	23.8125	1.15/16	1.9375	49.2125	2.15/16	2.9375	74.6125
31/32	0.9688	24.6063	1.31/32	1.9688	50.0063	2.31/32	2.9688	75.4063
1"	1.0000	25.4000	2"	2.0000	50.8000	3"	3.0000	76.2000

Steel City Bearings Ltd

for all your bearing & transmission needs



130 Upwell Street, Sheffield, England, S4 8AJ
 Tel: +44 (0) 114 256 1955 Fax: +44 (0) 114 256 1977 / 988
 Email: sales@steelcitybearings.com
www.steelcitybearings.com



130 Upwell Street, Sheffield, England, S4 8AJ
 Tel: +44 (0) 114 256 1955 Fax: +44 (0) 114 256 1977 / 988
 Email: sales@steelcitybearings.com
www.steelcitybearings.com

Steel City Bearings Ltd

for all your bearing & transmission needs

Steel City Bearings Ltd

for all your bearing & transmission needs

CONVERSION TABLE Inch to Metric

Fraction	Decimal	mm	Fraction	Decimal	mm	Fraction	Decimal	mm
1/32	0.0313	0.7938	1.1/32	1.0313	26.1938	2.1/32	2.0313	51.5938
1/16	0.0625	1.5875	1.1/16	1.0625	26.9875	2.1/16	2.0625	52.3875
3/32	0.0938	2.3813	1.3/32	1.0938	27.7813	2.3/32	2.0938	53.1813
1/8	0.1250	3.1750	1.1/8	1.1250	28.5750	2.1/8	2.1250	53.9750
5/32	0.1563	3.9688	1.5/32	1.1563	29.3688	2.5/32	2.1563	54.7688
3/16	0.1875	4.7625	1.3/16	1.1875	30.1625	2.3/16	2.1875	55.5625
7/32	0.2188	5.5563	1.7/32	1.2188	30.9563	2.7/32	2.2188	56.3563
1/4	0.2500	6.3500	1.1/4	1.2500	31.7500	2.1/4	2.2500	57.1500
9/32	0.2813	7.1438	1.9/32	1.2813	32.5438	2.9/32	2.2813	57.9438
5/16	0.3125	7.9375	1.5/16	1.3125	33.3375	2.5/16	2.3125	58.7375
11/32	0.3438	8.7313	1.11/32	1.3438	34.1313	2.11/32	2.3438	59.5313
3/8	0.3750	9.5250	1.3/8	1.3750	34.9250	2.3/8	2.3750	60.3250
13/32	0.4063	10.3188	1.13/32	1.4063	35.7188	2.13/32	2.4063	61.1188
7/16	0.4375	11.1125	1.7/16	1.4375	36.5125	2.7/16	2.4375	61.9125
15/32	0.4688	11.9063	1.15/32	1.4688	37.3063	2.15/32	2.4688	62.7063
1/2	0.5000	12.7000	1.1/2	1.5000	38.1000	2.1/2	2.5000	63.5000
17/32	0.5313	13.4938	1.17/32	1.5313	38.8938	2.17/32	2.5313	64.2938
9/16	0.5625	14.2875	1.9/16	1.5625	39.6875	2.9/16	2.5625	65.0875
19/32	0.5938	15.0813	1.19/32	1.5938	40.4813	2.19/32	2.5938	65.8813
5/8	0.6250	15.8750	1.5/8	1.6250	41.2750	2.5/8	2.6250	66.6750
21/32	0.6563	16.6688	1.21/32	1.6563	42.0688	2.21/32	2.6563	67.4688
11/16	0.6875	17.4625	1.11/16	1.6875	42.8625	2.11/16	2.6875	68.2625
23/32	0.7188	18.2563	1.23/32	1.7188	43.6563	2.23/32	2.7188	69.0563
3/4	0.7500	19.0500	1.3/4	1.7500	44.4500	2.3/4	2.7500	69.8500
25/32	0.7813	19.8438	1.25/32	1.7813	45.2438	2.25/32	2.7813	70.6438
13/16	0.8125	20.6375	1.13/16	1.8125	46.0375	2.3/16	2.8125	71.4375
27/32	0.8438	21.4313	1.27/32	1.8438	46.8313	2.27/32	2.8438	72.2313
7/8	0.8750	22.2250	1.7/8	1.8750	47.6250	2.7/8	2.8750	73.0250
29/32	0.9063	23.0188	1.29/32	1.9063	48.4188	2.29/32	2.9063	73.8188
15/16	0.9375	23.8125	1.15/16	1.9375	49.2125	2.15/16	2.9375	74.6125
31/32	0.9688	24.6063	1.31/32	1.9688	50.0063	2.31/32	2.9688	75.4063
1"	1.0000	25.4000	2"	2.0000	50.8000	3"	3.0000	76.2000



130 Upwell Street, Sheffield, England, S4 8AJ
Tel: +44 (0) 114 256 1955 Fax: +44 (0) 114 256 1977 / 988

Email: sales@steelcitybearings.com

www.steelcitybearings.com



130 Upwell Street, Sheffield, England, S4 8AJ
Tel: +44 (0) 114 256 1955 Fax: +44 (0) 114 256 1977 / 988
Email: sales@steelcitybearings.com
www.steelcitybearings.com

Steel City Bearings Ltd

for all your bearing & transmission needs

CONVERSION TABLE Inch to Metric

Fraction	Decimal	mm	Fraction	Decimal	mm	Fraction	Decimal	mm
1/32	0.0313	0.7938	1.1/32	1.0313	26.1938	2.1/32	2.0313	51.5938
1/16	0.0625	1.5875	1.1/16	1.0625	26.9875	2.1/16	2.0625	52.3875
3/32	0.0938	2.3813	1.3/32	1.0938	27.7813	2.3/32	2.0938	53.1813
1/8	0.1250	3.1750	1.1/8	1.1250	28.5750	2.1/8	2.1250	53.9750
5/32	0.1563	3.9688	1.5/32	1.1563	29.3688	2.5/32	2.1563	54.7688
3/16	0.1875	4.7625	1.3/16	1.1875	30.1625	2.3/16	2.1875	55.5625
7/32	0.2188	5.5563	1.7/32	1.2188	30.9563	2.7/32	2.2188	56.3563
1/4	0.2500	6.3500	1.1/4	1.2500	31.7500	2.1/4	2.2500	57.1500
9/32	0.2813	7.1438	1.9/32	1.2813	32.5438	2.9/32	2.2813	57.9438
5/16	0.3125	7.9375	1.5/16	1.3125	33.3375	2.5/16	2.3125	58.7375
11/32	0.3438	8.7313	1.11/32	1.3438	34.1313	2.11/32	2.3438	59.5313
3/8	0.3750	9.5250	1.3/8	1.3750	34.9250	2.3/8	2.3750	60.3250
13/32	0.4063	10.3188	1.13/32	1.4063	35.7188	2.13/32	2.4063	61.1188
7/16	0.4375	11.1125	1.7/16	1.4375	36.5125	2.7/16	2.4375	61.9125
15/32	0.4688	11.9063	1.15/32	1.4688	37.3063	2.15/32	2.4688	62.7063
1/2	0.5000	12.7000	1.1/2	1.5000	38.1000	2.1/2	2.5000	63.5000
17/32	0.5313	13.4938	1.17/32	1.5313	38.8938	2.17/32	2.5313	64.2938
9/16	0.5625	14.2875	1.9/16	1.5625	39.6875	2.9/16	2.5625	65.0875
19/32	0.5938	15.0813	1.19/32	1.5938	40.4813	2.19/32	2.5938	65.8813
5/8	0.6250	15.8750	1.5/8	1.6250	41.2750	2.5/8	2.6250	66.6750
21/32	0.6563	16.6688	1.21/32	1.6563	42.0688	2.21/32	2.6563	67.4688
11/16	0.6875	17.4625	1.11/16	1.6875	42.8625	2.11/16	2.6875	68.2625
23/32	0.7188	18.2563	1.23/32	1.7188	43.6563	2.23/32	2.7188	69.0563
3/4	0.7500	19.0500	1.3/4	1.7500	44.4500	2.3/4	2.7500	69.8500
25/32	0.7813	19.8438	1.25/32	1.7813	45.2438	2.25/32	2.7813	70.6438
13/16	0.8125	20.6375	1.13/16	1.8125	46.0375	2.3/16	2.8125	71.4375
27/32	0.8438	21.4313	1.27/32	1.8438	46.8313	2.27/32	2.8438	72.2313
7/8	0.8750	22.2250	1.7/8	1.8750	47.6250	2.7/8	2.8750	73.0250
29/32	0.9063	23.0188	1.29/32	1.9063	48.4188	2.29/32	2.9063	73.8188
15/16	0.9375	23.8125	1.15/16	1.9375	49.2125	2.15/16	2.9375	74.6125
31/32	0.9688	24.6063	1.31/32	1.9688	50.0063	2.31/32	2.9688	75.4063
1"	1.0000	25.4000	2"	2.0000	50.8000	3"	3.0000	76.2000

Steel City Bearings Ltd

for all your bearing & transmission needs



130 Upwell Street, Sheffield, England, S4 8AJ
Tel: +44 (0) 114 256 1955 Fax: +44 (0) 114 256 1977 / 988

Email: sales@steelcitybearings.com

www.steelcitybearings.com



130 Upwell Street, Sheffield, England, S4 8AJ
Tel: +44 (0) 114 256 1955 Fax: +44 (0) 114 256 1977 / 988
Email: sales@steelcitybearings.com
www.steelcitybearings.com

Steel City Bearings

Welcome to Steel City Bearings Limited, one of the world's leading suppliers of all bearing products.

● SKF ● FAG ● RHP ● TIMKEN ● STEYR ● NSK ● KOYO ● NTN ● NACHI ● SNR ● CBF ● ROLLWAY ● NADELLA ● INA ● COOPER ● TORRINGTON ● FAFNIR ● RENOLD ● TSUBAKI ● FLEXELLO ● OPTIBELT ● VARYBOND

Steel City Bearings Ltd can offer the following services to all its customers:

- Massive stocks of all leading brands
- Same day despatch on ALL stock items
- Highly competitive pricing
- Next Day delivery to mainland UK
- Super fast international deliveries
- Over 21,500 lines and over 178,900 items in stock



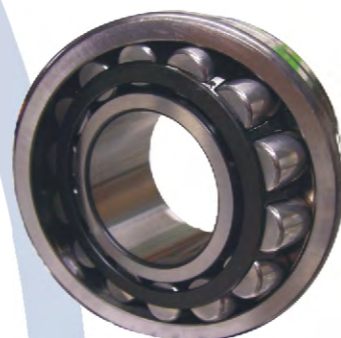
Steel City Bearings can also support your requirements for hard-to-obtain or non-stock items from our many contacts in Europe & the USA.



Bearings

Types we have available:

- Adaptor / Withdrawal Sleeves
- Angular Contact Ball Bearings
- Ball Screws
- Cylindrical Roller Bearings
- Cylindrical Roller Thrust Bearings
- Deep Groove Ball Bearings
- Fixing Rings
- Housings
- Housing Seals
- Imperial Taper Roller Bearings
- Linear Bearings
- Linear Guides
- Locking Washers
- Locknuts
- Metric Taper Roller Bearings
- Needle Roller Bearings
- Nice Bearings
- Popular Metric Ball Bearings
- Precision Bearings
- Rod Ends
- Self-Aligning Ball Bearings
- Spherical Roller Bearings
- Spherical Plain Bearings
- Spherical Roller Thrust Bearings
- Split Spherical Roller Bearings
- Stainless Steel Bearings
- Thin Section Ball Bearings
- Thrust Ball Bearings



Visit
our
Website

www.steelcitybearings.com

Massive stocks of all leading brands . Same day despatch on ALL stock items.
Over 100 years of bearing and transmission knowledge . Highly competitive pricing.
Friendly and reliable sales team . Over 34,000 lines and 551,000 items in stock.
Next day delivery to mainland UK including Northern Ireland.
24 Hour Callout Service available



BETA: THE HISTORY OF ITALIAN TOOLS

1923 - Alessandro Ciceri founded "Alessandro Ciceri & Figli", to manufacture iron and steel casts.

1939 - The trademark Beta was registered and the Company became involved mainly in manufacturing professional tools.

1960 - Beta Utensili employed two hundred people, exported their products and stood out as an up-and-coming manufacturer of professional tools.

1969 - The revolutionary orange sheet metal "Tank" trolley was developed; from that moment orange would result in a unique style for the trademark Beta.

1971 - Beta Utensili entered the motor racing world, with a view to testing and developing their products.

1975 - The Company scored their first Formula 1 victory with the orange **Beta Utensili March** driven by Vittorio Brambilla, who won the Austrian Grand Prix in Zeltweg, in the pouring rain.

1980 - Beta Utensili further penetrated the main European markets, progressively establishing branches in France, Britain, Holland, Spain and Poland.

1995 - It took the Company no more than 8 months to have their **Quality System** certified in accordance with the **ISO 9001** standards.

2000 - launch of the new Beta Utensili catalogue testified to ongoing growth. The range of available products was doubled and the over 10,000 coded items were divided into 20 product ranges.

2002 - Beta Utensili's range was further expanded, being supplemented with safety footwear as well as with work and free-time wear, namely the "Beta Work" range.

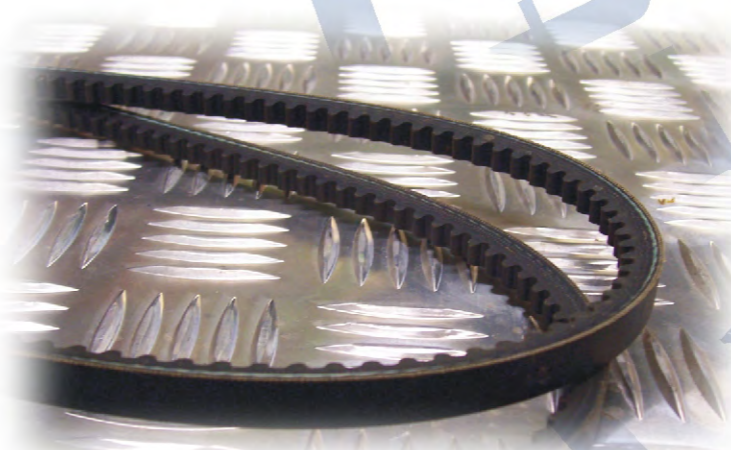
2014 - Ongoing growth leading to today: a product range – distributed worldwide – which exceeds 10,000 coded items and satisfies the most demanding professionals' requirements.



Belts

Types we have available:

- Timing Belts
- Variable Speed Belts
- V-Belts



Transmission

Products we have available:

- Bushes
- Chains & Sprockets
- Pulleys
- Wheels & Castors



Maintenance

Products we have available:

- Automatic Lubricators
- Bearing Pullers
- Chain Breakers
- Induction Heaters
- Speedi-Sleeves
- Circlips
- Nilos Rings
- Seals
- Sealants
- Adhesives





Steel City Bearings Ltd

for all your bearing & transmission needs

UK SOLE DISTRIBUTOR

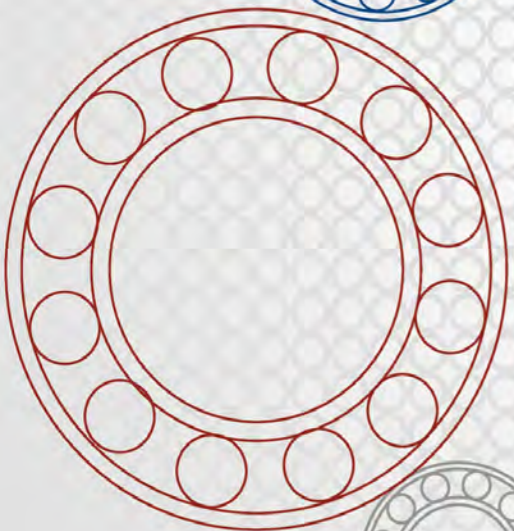
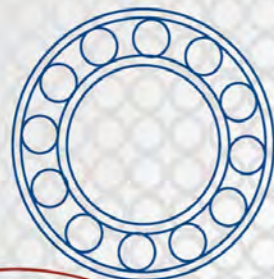


Moving the world

Since

1968

Years back when we at KG started a small movement, people were skeptical. This movement was driven by strong desire and sincere passion to succeed in the eyes of the customers. Today, KG International is truly a global company preferred for its quality, product assortment, reliability and service. Our experience and expertise helped us to build strategic alliances with world renowned brands such as NACHI & NTN from Japan, whom we exclusively represent for the Gulf Region, Middle East, Sub-continent and the African continent. The trust and confidence of our customers enabled us to introduce KG brand, which today is well respected in its segment around the world. All this has helped us achieving our motto of "Total Customer Satisfaction" by meeting the requirement of our customers – a wide range and variety, genuine products, competitive prices, marketing and technical support, immediate availability and an efficient distribution system. We continue to aspire as KG has always seen the word possible within impossible. Join the Movement.



KG[®] International FZCO *The Movement Since 1968...*

www.kginternational.com
An ISO certified company

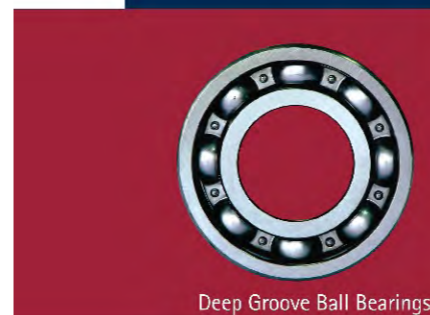
Head Office Address: P.O. Box 17122, Jebel Ali Free Zone, UAE. T: +9714 8815547 F: +9714 8816423 / 8818509 E: info@kginternational.com

ENGLAND | DUBAI | INDIA

Product Range for various applications



Needle Bearings & Needle Cages



Deep Groove Ball Bearings



Miniature & Extra Small Bearings



Plummer Block Housings



Tapered Roller Bearings



Cylindrical Roller Bearings



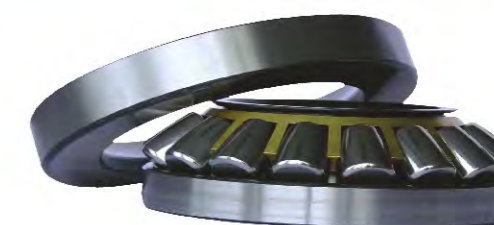
Angular Contact Bearings



Automotive Bearings



Spherical Roller Bearings



Thrust Ball Bearings / Spherical Roller Thrust Bearings



Self-aligning Ball Bearings



Ball Bearing Units



Adapter Sleeve Assemblies

KG[®] Bearings

BEARING PEOPLE SINCE 1968...

www.kginternational.com

An ISO Certified Company



KG | KG-P2P | KG-E